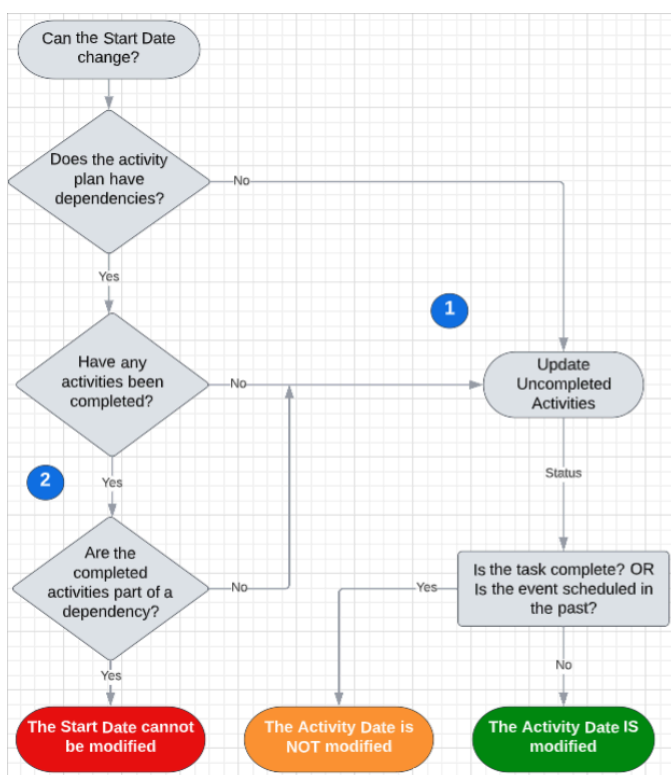


Can the activity plan start date be modified later?

When an Activity Plan is originally created the **Start Date** provides the basis for scheduling the associated activities, before or after the start date. In most cases the start date can be modified. Which, in turn, automatically reschedules the activities associated with the activity plan. The following decision tree illustrates the logic involved with this process.



Follow the answers to the decision tree questions to their final outcome. When the *Start Date* cannot be modified the entry field will be read only.

What determines if an activity is complete?

- A **Task** activity is considered *Complete* when the task status value is completed.
- An **Event** activity is considered *Complete* when the date of the event is in the past, relative to the current date. Time is not factored into the determination.